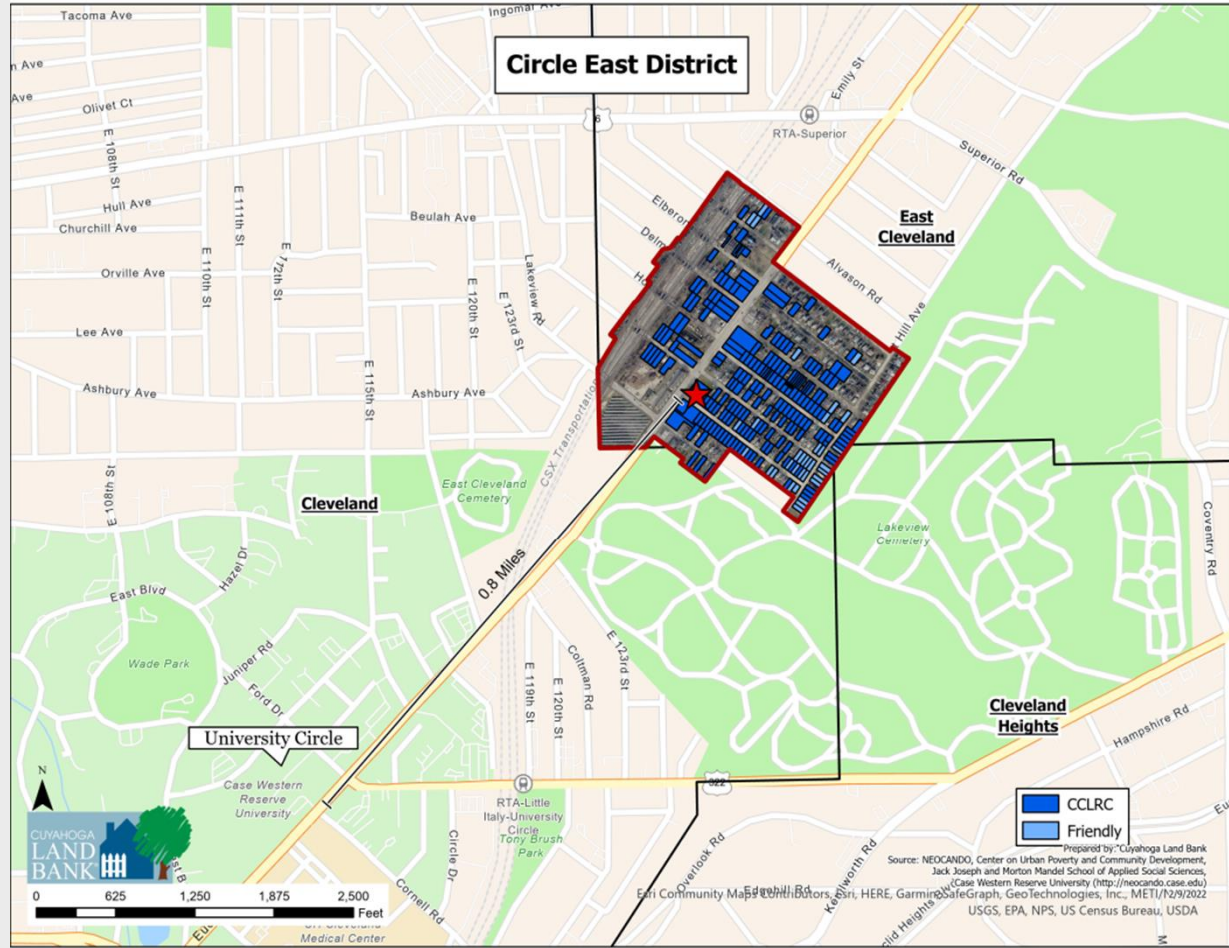
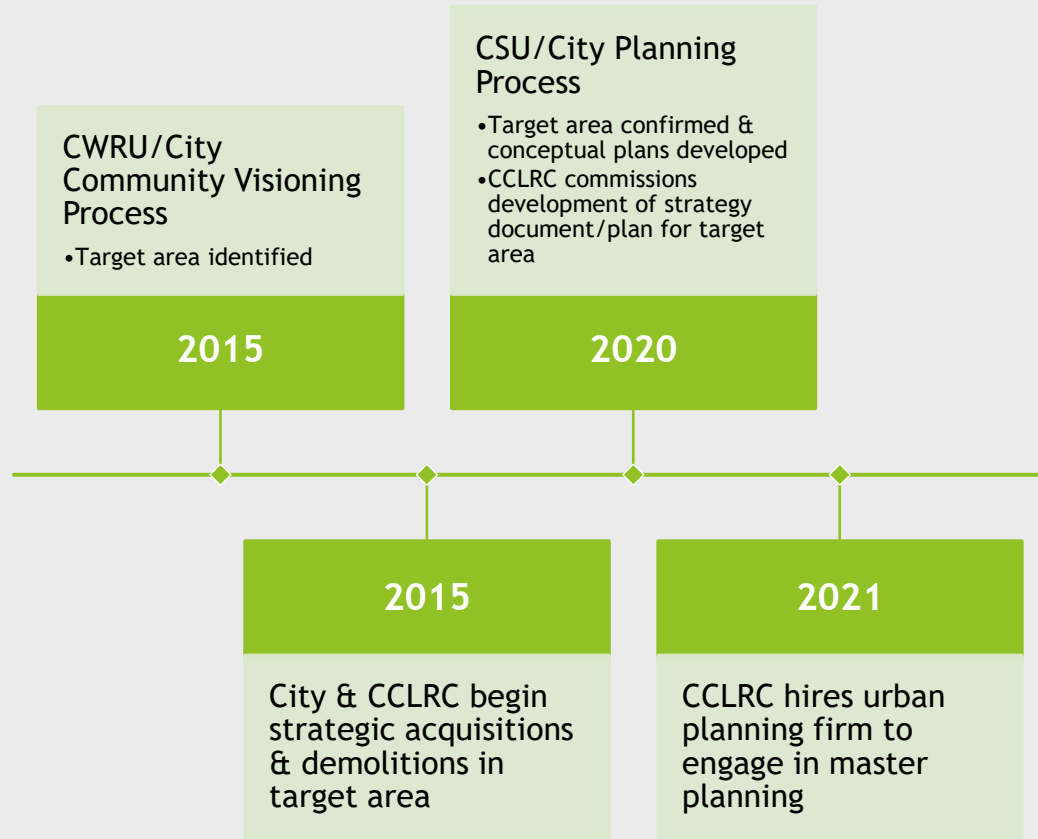


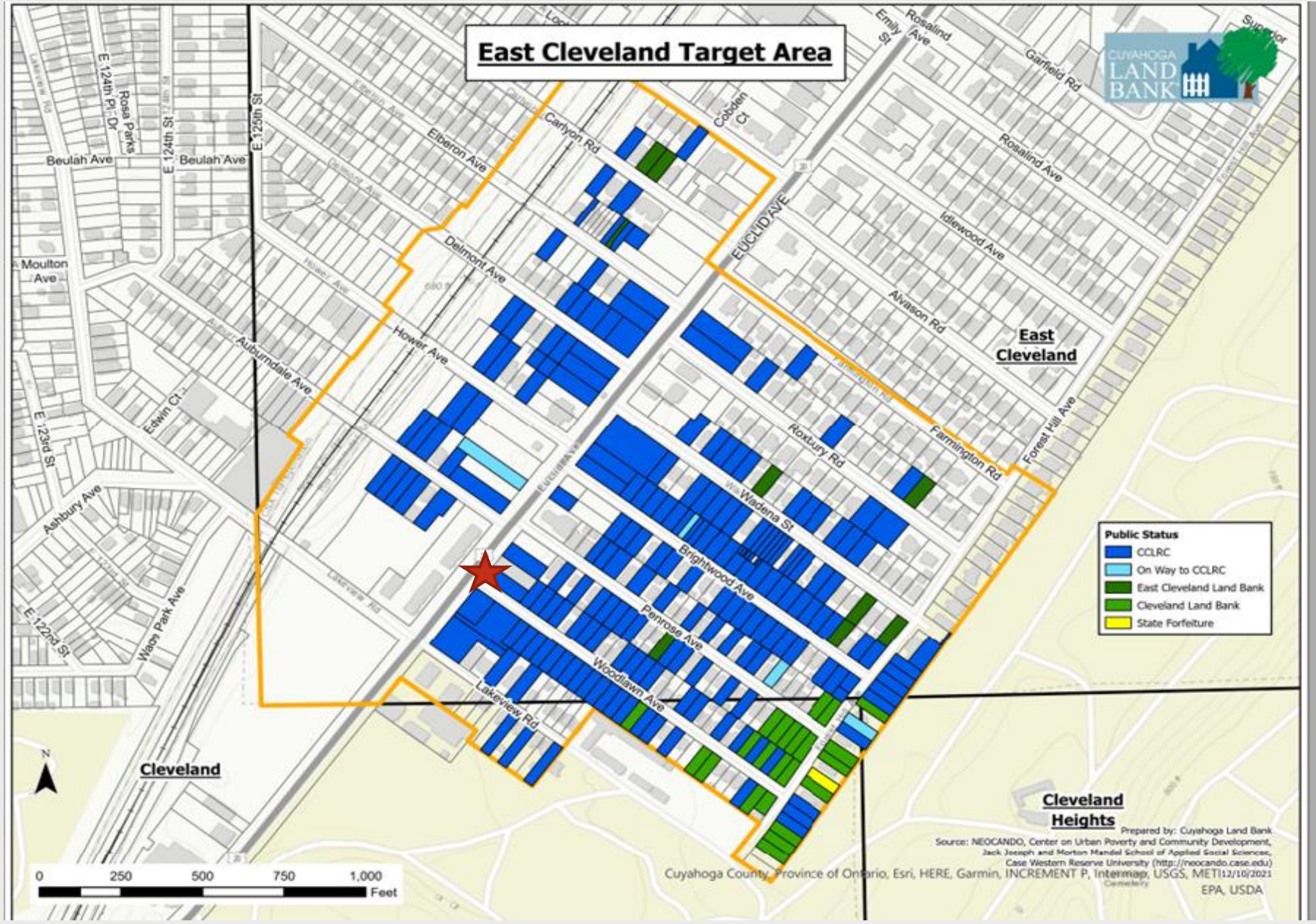


Revitalizing East Cleveland

A City of East Cleveland &
Cuyahoga Land Bank
collaboration

Project Background & History





Project Summary

▶ Project Goals

- ▶ Provide needed space to attract companies and create new jobs
- ▶ Spur redevelopment along Euclid Avenue Commercial Corridor

▶ Project Importance

- ▶ Key anchor to planned revitalization of the Commercial Corridor
- ▶ Gateway for a 200+ units of new housing

Partnerships

Housing

Private Developers

Cuyahoga County

Foundations

Realtors

Housing Counseling agencies

Greater Circle Living

County Planning Commission

Economic Development

JobsOhio

Team NEO

Greater Cleveland Partnership

Cuyahoga County

Loiter

University Circle Inc.

LISC

Community Engagement

Arts Organizations

Non-profit social service agencies

City of East Cleveland

City of Cleveland

Western Reserve Area Agency on Aging

Infrastructure

City of East Cleveland

City of Cleveland

Cleveland Water

NEORS

PC for People

Western Reserve Land Conservancy

Trust for Public Land

Lakeview Cemetery

Lease Up Plan

- ▶ Goal is renovation & tenanting building in 2022/2023
- ▶ Renovate building to be attractive and functional
- ▶ Collaborating with key partners (e.g. JobsOhio, TeamNEO, BioEnterprise & UCI)
- ▶ Developed strategic marketing material
- ▶ Hired commercial broker (CBRE) to target ideal tenants (network)
- ▶ Land Bank is committed to the project & all financial obligations

Mickey's Building Renovation

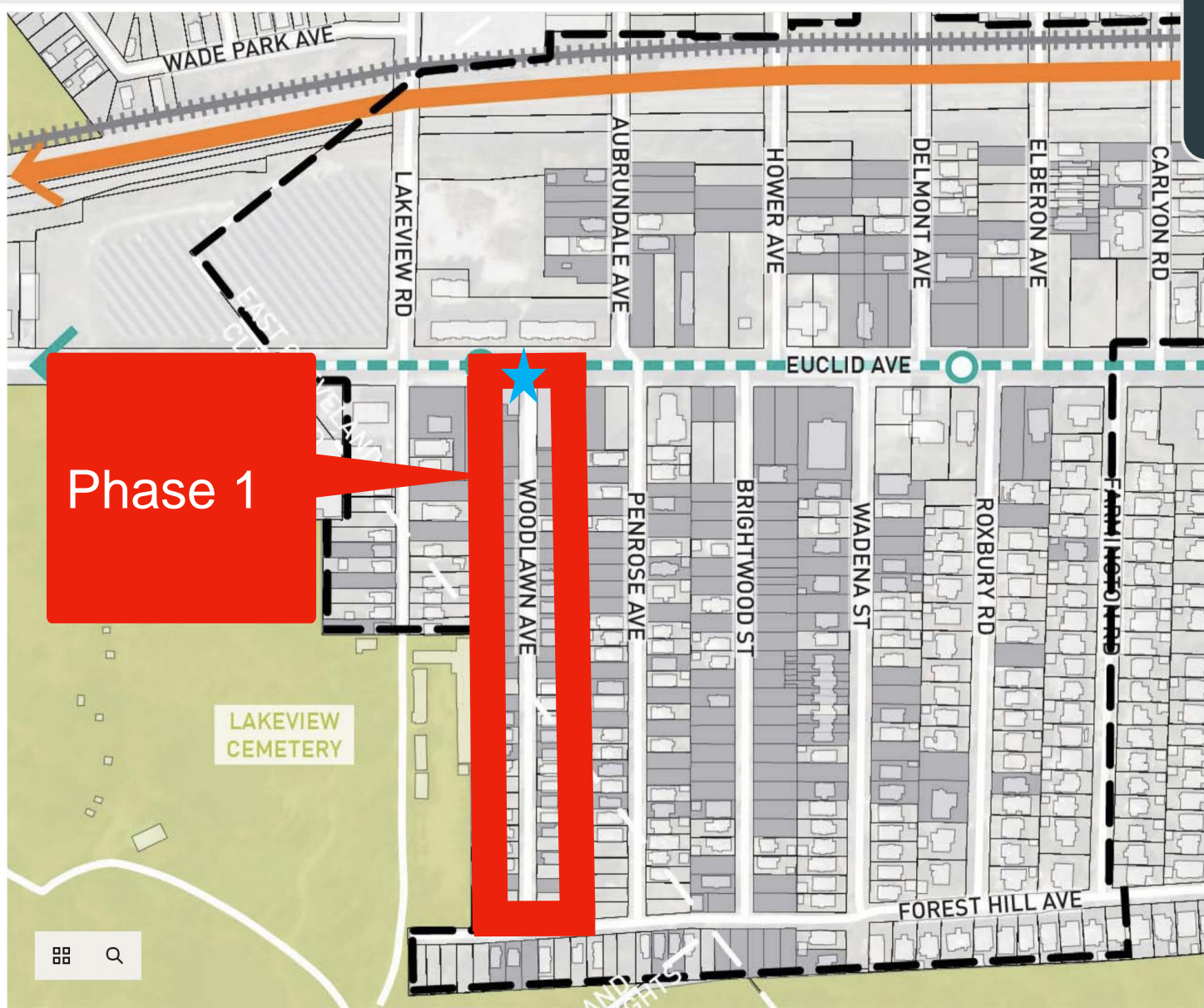






Gateway:
Commercial
Corridor





Phase 1

PHASE 1



- PHASE 1 (2022)
- Planning & Fundraising
- Renovation & activation of Mickey's Building

PHASE 2

- PHASE 2 (2023-2024)
- Infrastructure work on Woodlawn, Penrose & Forest Hills
- Residential construction on Woodlawn

PHASE 3

- PHASE 3 (2024-2026)
- Project Buildout

-  RTA RED LINE (HEAVY RAIL)
-  RTA HEALTHLINE (BUS RAPID TRANSIT)

Thank you

Dennis Roberts, Esq. - Director of Real Estate Development,
Cuyahoga Land Bank